

Arcserve® UDP Archiving 6.0_With_Update_1

Steps to launch the Amazon Web Service AMI instance

1. Login to the Amazon Web Services console



Sign In or Create an AWS Account

What is your email (phone for mobile accounts)?

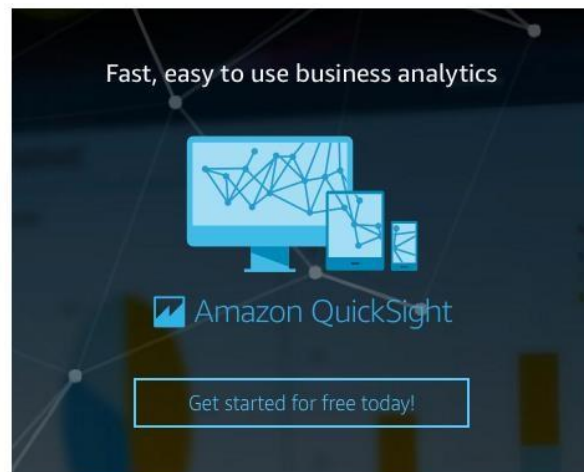
E-mail or mobile number:

I am a new user.

I am a returning user
and my password is:

Sign in using our secure server

[Forgot your password?](#)



Learn more about [AWS Identity and Access Management](#) and [AWS Multi-Factor Authentication](#), features that provide additional security for your AWS Account. View full [AWS Free Usage Tier](#) offer terms.

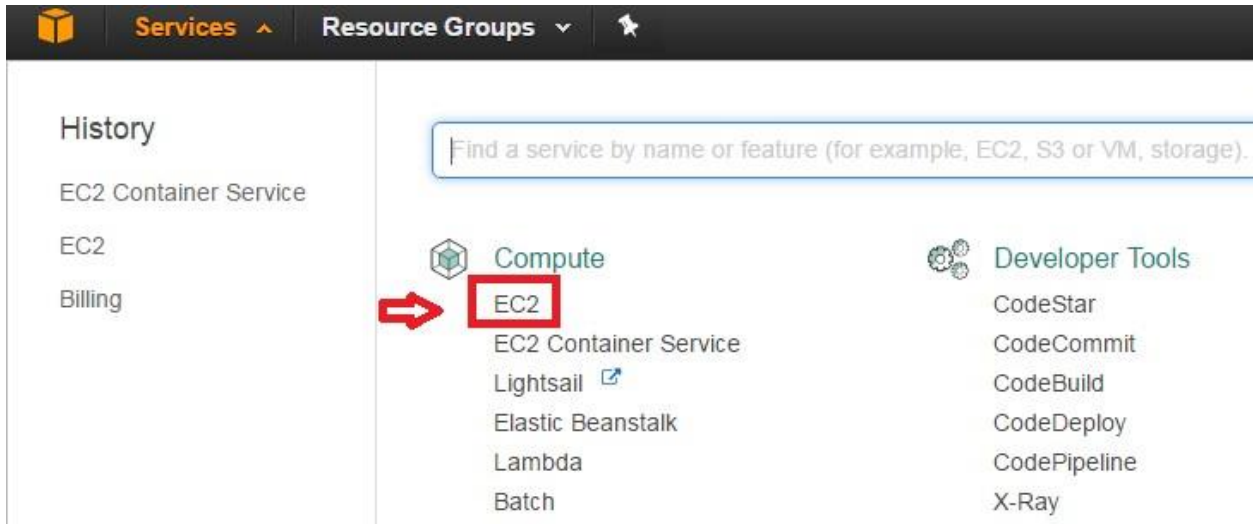
About Amazon.com Sign In

Amazon Web Services uses information from your Amazon.com account to identify you and allow access to Amazon Web Services. Your use of this site is governed by our [Terms of Use](#) and [Privacy Policy](#) linked below. Your use of Amazon Web Services products and services is governed by the [AWS Customer Agreement](#) linked below unless you purchase these products and services from an AWS Value Added Reseller. The AWS Customer Agreement was updated on March 31, 2017. For more information about these updates, see [Recent Changes](#).

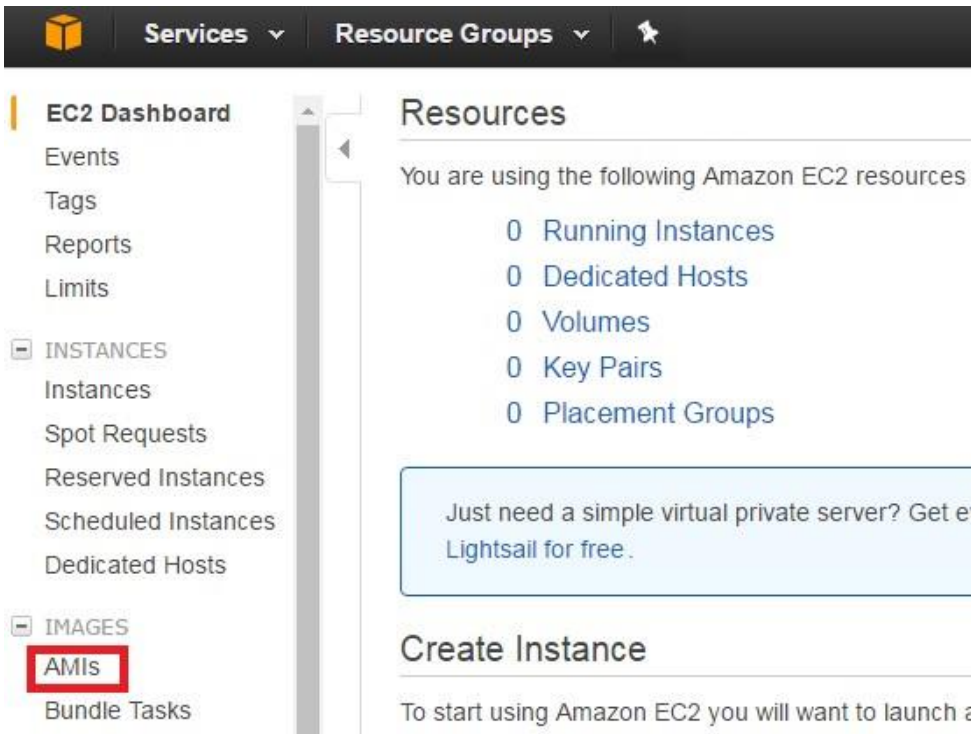
[Terms of Use](#) [Privacy Policy](#) [AWS Customer Agreement](#) © 1996-2017, Amazon.com, Inc. or its affiliates

An **amazon.com** company

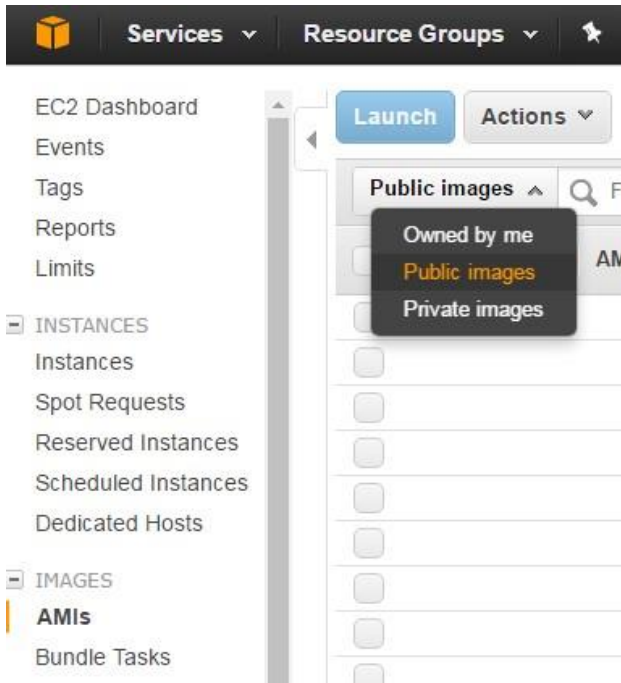
2. Select 'EC2' from the 'Services' menu item



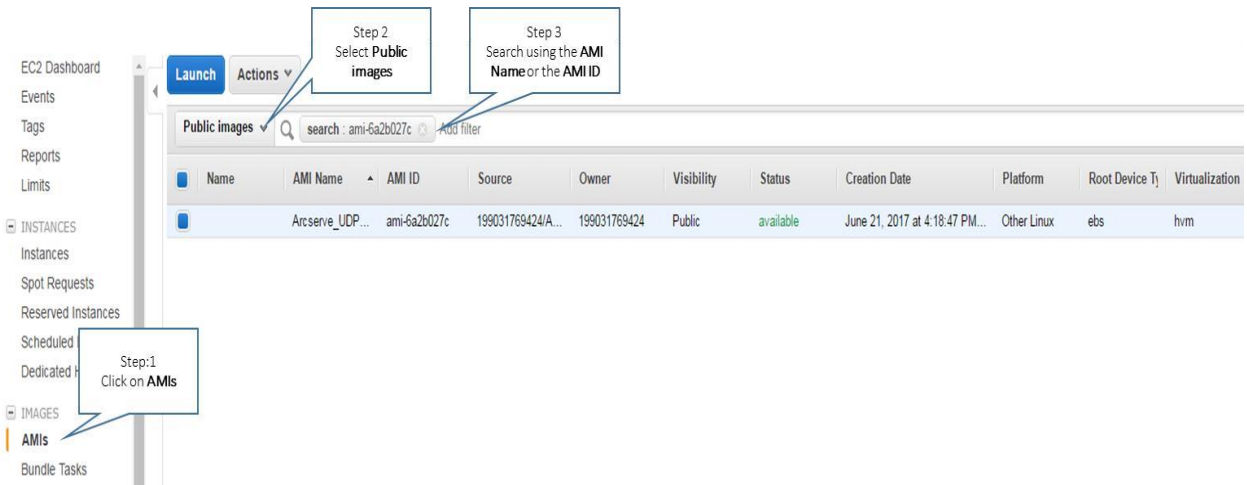
3. Click on 'AMIs' under 'IMAGES'



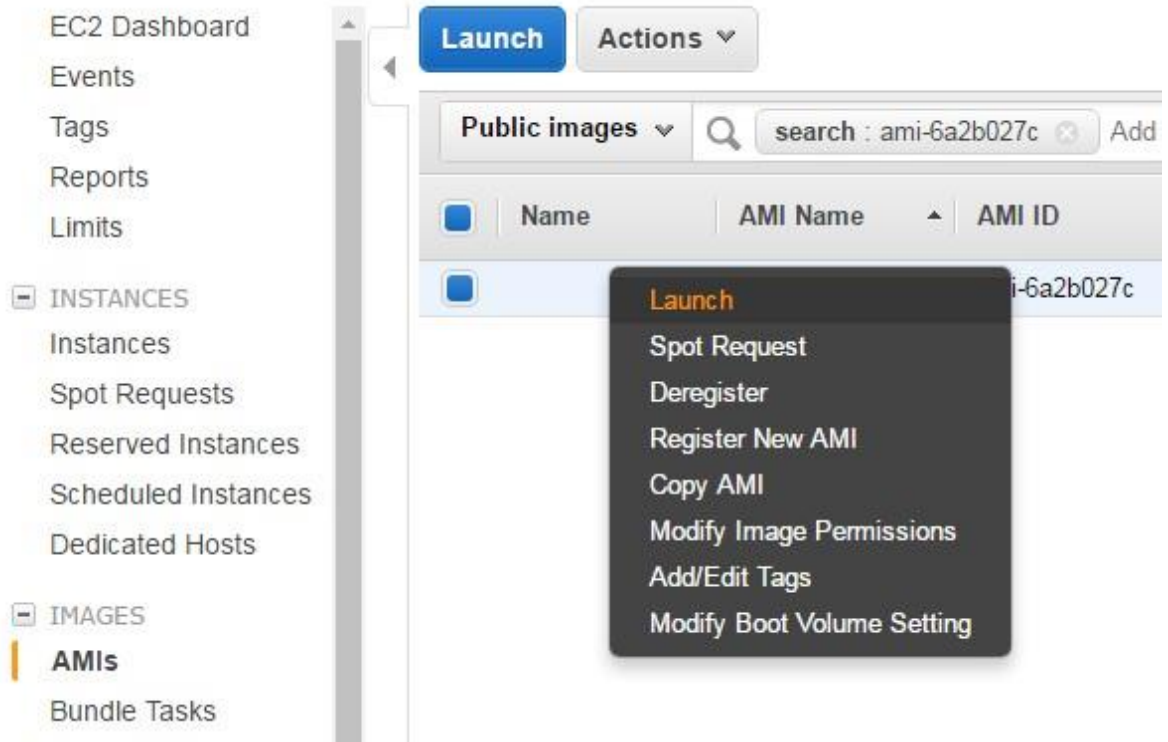
4. Select 'Public Images' from the drop down menu



5. Search for AMI with name: 'Arcserve_UDP_Archiving_6_With_Update_1_AMI' OR with ID: 'ami-963a0aed'



6. Select the AMI, and click 'Launch'



7. Please follow steps mentioned in the [Deployment & Configuration guide](#).
8. Congratulations! You have successfully deployed & configured UDP archiving!

This document is for your informational purposes only. Neither Arcserve (USA), LLC, its affiliates, subsidiaries, predecessors, assigns and successors ("Arcserve") assumes any responsibility for the accuracy or completeness of the information. To the extent permitted by applicable law, Arcserve provides this document "as is" without warranty of any kind, including, without limitation, any implied warranties of merchantability, fitness for a particular purpose, or noninfringement. In no event will Arcserve be liable for any loss or damage, direct or indirect, from the use of this document, including, without limitation, lost profits, business interruption, goodwill or lost data, even if Arcserve is expressly advised in advance of the possibility of such damages.

Copyright © 2017 Arcserve (USA) LLC and its affiliates and subsidiaries. All rights reserved. All trademarks, trade names, service marks and logos referenced herein belong to their respective companies. Arcserve confidential and proprietary information. Do not reproduce or forward without Arcserve's prior written permission.